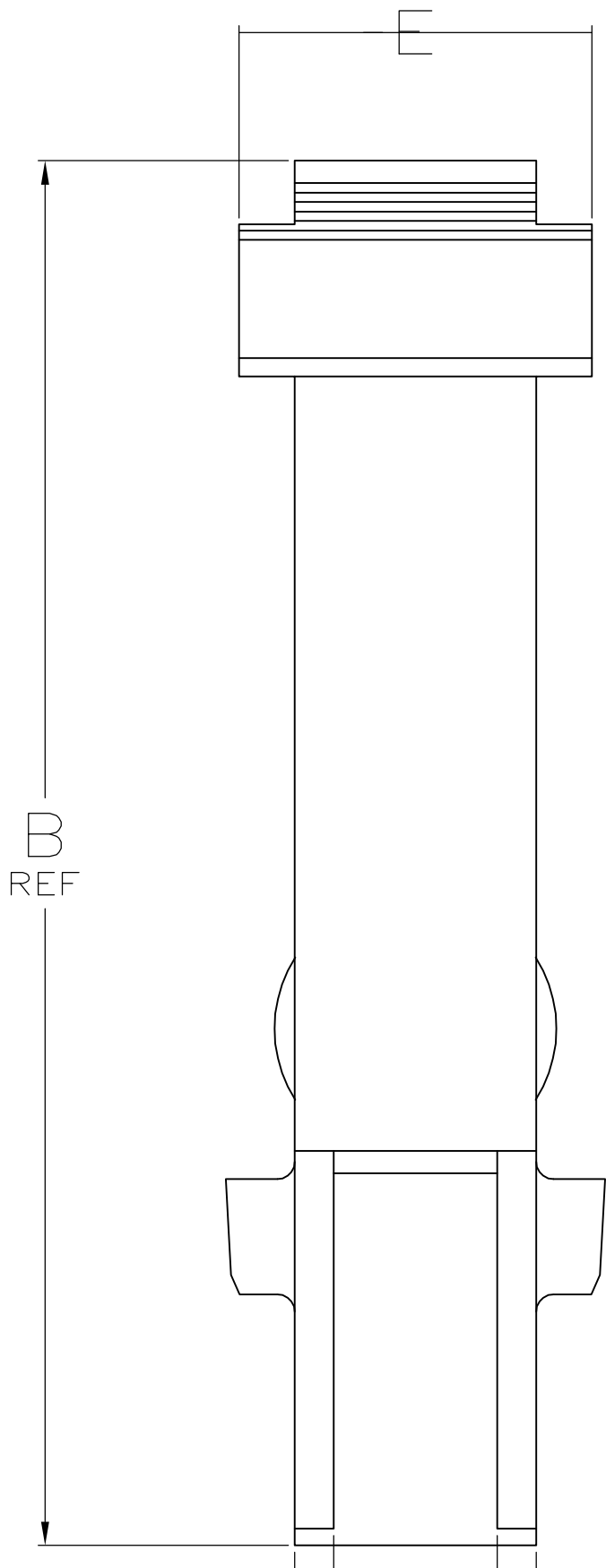
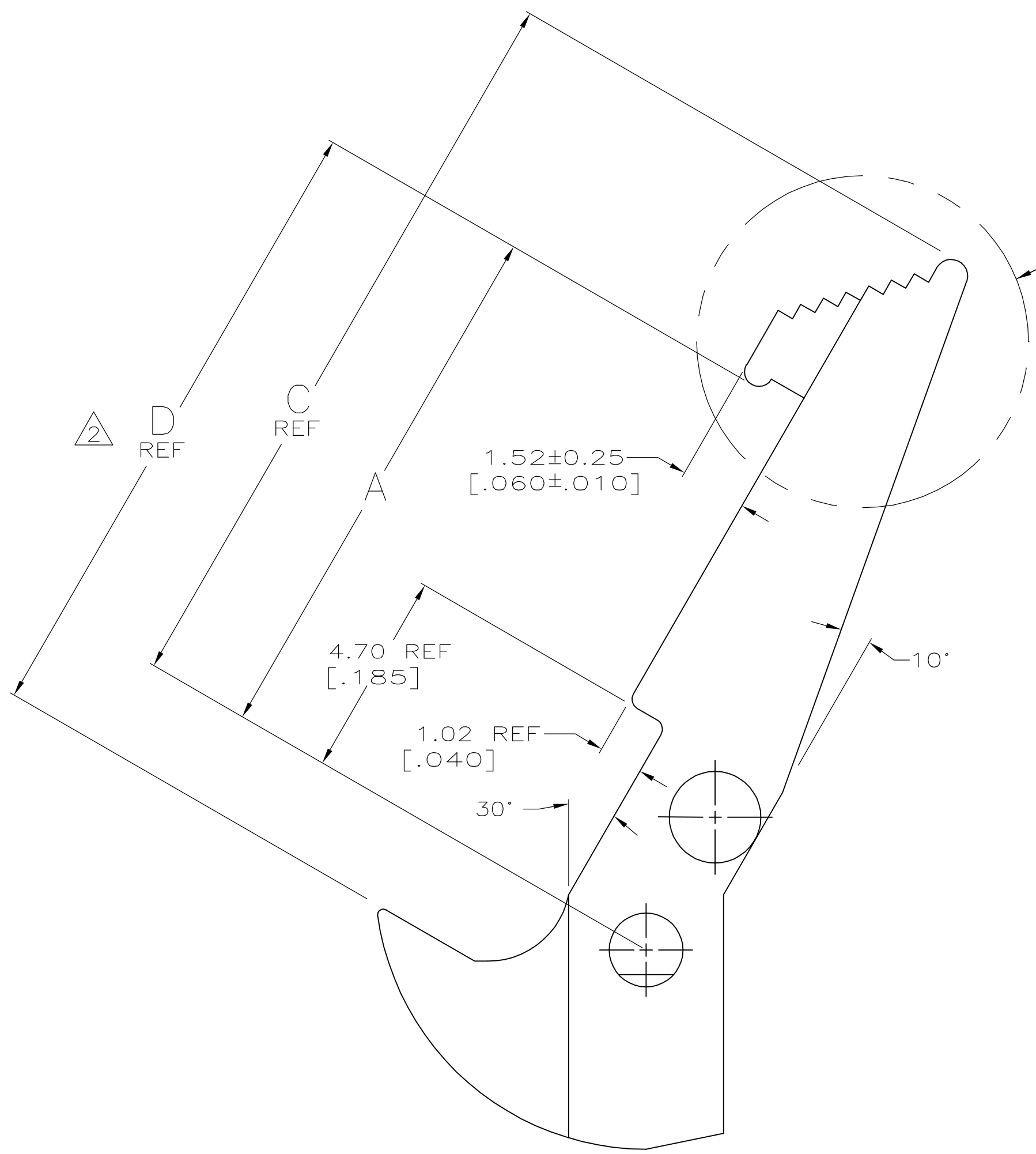


THIS DRAWING IS UNPUBLISHED. RELEASED FOR PUBLICATION
 © COPYRIGHT BY TYCO ELECTRONICS CORPORATION. ALL RIGHTS RESERVED.

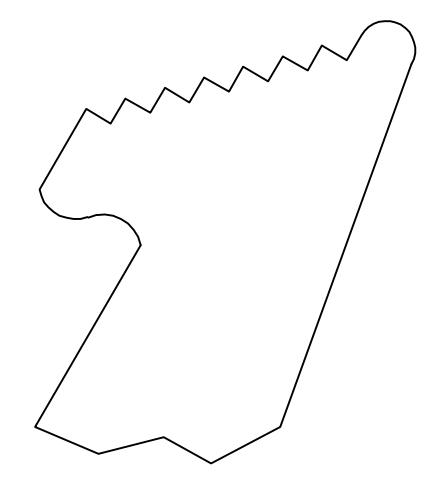
| LOC | DIST | REVISIONS | | | |
|-----|------|-------------|---------------------------|---------|---------|
| P | LTR | DESCRIPTION | DATE | DWN | APVD |
| GP | 00 | H | REVISED PER ECO 07-005130 | 06MAR07 | JDP SLB |



2.34 REF
[.092]



SEE DETAIL F
HANDLE AREA
SEE TABLE



DETAIL F
HANDLE AREA

OBSOLETE

| COLOR | HANDLE AREA | E | D | C | B | A | PART NUMBER |
|------------|--------------|-----------------|--------------|--------------|--------------|-------------|-------------|
| LIGHT BLUE | AS SHOWN | 5.21 [.205] | 10.57 [.416] | 13.18 [.519] | 16.31 [.642] | 8.38 [.330] | 102312-5 |
| BLUE | AS SHOWN | 5.21 [.205] | 10.57 [.416] | 13.18 [.519] | 16.31 [.642] | 8.38 [.330] | 102312-4 |
| BLACK | PER DETAIL F | 3.56 [.140] REF | 8.26 [.325] | 10.74 [.423] | 13.36 [.526] | 6.07 [.239] | 102312-3 |
| BLACK | PER DETAIL F | 3.56 [.140] REF | 12.04 [.474] | 14.53 [.572] | 17.14 [.675] | 9.86 [.388] | 102312-2 |
| BLACK | AS SHOWN | 5.21 [.205] | 10.57 [.416] | 13.18 [.519] | 16.31 [.642] | 8.38 [.330] | 102312-1 |

- ① TO BE USED WITH AMP-LATCH™ CONNECTOR WITH STANDARD COVER.
- ② MATING RECEPTACLE HEIGHT.
- ③ NOT RELEASED, NOT PRODUCTION TOOLED.
- ④ FLAME RETARDANT PBT. UL94V-0 RATED.

THIS DRAWING IS A CONTROLLED DOCUMENT.

| | | |
|------------------|------------|--------------|
| DWN | D.GELTZ | 07/08/92 |
| CHK | R.STONE | 7-10-92 |
| APVD | - | - |
| PRODUCT SPEC | - | - |
| APPLICATION SPEC | - | - |
| WEIGHT | - | - |
| CUSTOMER DRAWING | SCALE 10:1 | SHEET 1 OF 1 |

tyco Electronics
 Tyco Electronics Corporation
 Harrisburg, PA 17105-3608

LATCH, UNIVERSAL HEADER, AMP-LATCH

SIZE A2 CAGE CODE 00779 DRAWING NO C=102312 RESTRICTED TO -